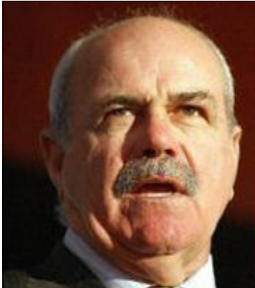


# **“Winning isn’t everything. It’s the only thing.””**

WATCH THIS SPACE.....THE PANEL IS STILL SIGNING ON.....WATCH THIS SPACE



\*Leigh Matthews



\*Craig Williams



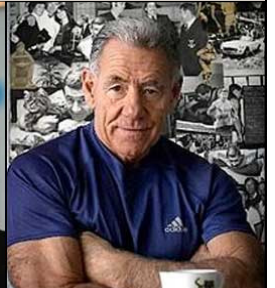
\*Renae Hallinan



\*Glen Manton



\*Claire Mitchell-Taverner



\*Tommy Hafey

## The 11th Business of Winning Luncheon

**“The corporate lunch of the year  
comes to Crown”**

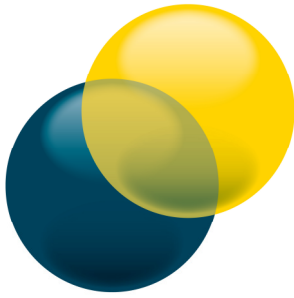


**Friday 10th September Studio 3, Crown Casino 12.00 for 12.30 PM**

- Tables of 10 - ideal for entertaining your key clients and friends
- Networking opportunities at the lunch and the social hour that follows
- High quality inspirational entertainment
- Five star environment with food and wines to match
- Promotion of all corporate tables on the giant screens
- Corporate tables are acknowledged from the stage
- Valuable door prizes
- Complimentary parking

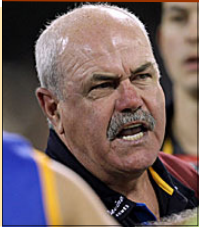


**THE WINNERS LUNCHEON IS PROUDLY SUPPORTED BY OUR MAJOR SPONSOR – MOLTONI GROUP**



**“Towards a world without myeloma... without cancer”**

**Join our panel of winners as we examine (not too seriously) “the business of winning”, and we support the work of the Myeloma Foundation.**



### **Leigh Matthews**

Where does one start to describe Leigh Matthews? Long time Hawthorn Football Club player and captain, premiership player, coach of four AFL premierships (Collingwood and Brisbane), Leigh Matthews has done it all and then some.

A much decorated legend of the Australian game Leigh Matthews has moved on to play a significant role in the media as a commentator and on air personality.



### **Craig Williams**

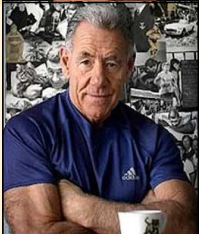
Champion Jockey and entertaining speaker, Craig says of himself “The harder I work, the luckier I get”. Once an aspiring and overweight apprentice, he is now an internationally respected jockey with 1000 winning rides. It's been an amazing journey for Craig Williams. More than a decade after Williams began his career, the former Cranbourne schoolboy is a wealthy man He has brushed with royalty and has ridden for some of the wealthiest owners in the world. .



### **Claire Mitchell-Taverner**

Gold Medal Hockey Player, Olympian, Author, Career Development Manager . Claire Mitchell-Taverner is one of Australia’s great sportswomen. Rated as one of the world’s best goal scoring mid-fielders with 190 international matches and 47 goals to her credit.

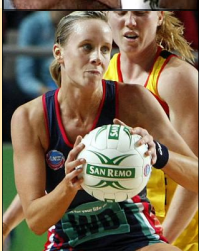
As an executive with the AFL Player’s Association Claire has hands-on contact with six clubs in Melbourne, and with AFL Players' Association consultants around the country.



### **Tommy Hafey**

Among the most loved personalities in AFL football, Tom Hafey's honesty and ability with people have been major reasons for his great success. During his career in football Tom Hafey coached four teams to premierships. He coached to ten Grand Final appearances and is one of only six coaches to have coached over 500 AFL/VFL games. Eighteen players coached by Tom have become AFL Coaches. Only once in twenty-two years' coaching AFL football did a Hafey-coached team finish lower than seventh.

In 2003 Tom Hafey was recognised as Victorian Father of the Year.



### **Renae Hallinan**

Australian Netball player Renae Hallinan’s consistently brilliant performances in the 2009 ANZ Championship Season caught the eye of national coach Norma Plummer, earning her first selection in the nation’s top 12. She made her much anticipated international debut for the Australian Diamonds against New Zealand in September 2009, owning the wing defence position for the entire international season. Her performances on the world stage were so impressive that she was awarded the ‘2009 International Player of the Year’, an amazing feat in her debut year.



### **Glen Manton**

Former AFL premiership player Glen Manton’s ability to ‘edu-tain’ has created high demand for his services as a speaker, host and MC with many and varied organisations - corporate and community alike. His work with youth in particular is highly regarded. It extends to indigenous communities and is complemented by a degree in Education (RMIT), mentoring aptitude and philanthropic commitment .



### **Your Master of Ceremonies, Michael Derum**

When the “Winners” lunch began way back in 1999 the event was proudly led by the late, great Ron Casey. When Ron sadly passed on, Michael Derum of the Hawthorn Football Club soon stepped in and has wonderfully led most of the luncheons since that time.

As a retired high school principal with a passion for all sports and a great sense of humour, Mike has an apparently bottomless well of knowledge. Always sensitive to his on stage guests, Mike Derum has long been an integral part of the Winners on-stage team to the delight of our corporate and other guests.



**The Rotary Club of Camberwell**  
has been the key organiser of the Business of Winning Luncheon since 1999. Here is the "winners" roll call of the events over that time.

**2008**

Francis Bourke, Mike McKay, Barry Michael Dean Pullar, Greg Champion

**2007**

Greg Champion, Russell Mark, Geoff Miles, Max Walker

**2006**

Leigh Matthews, Alastair Clarkson, Rodney Eade, Craig Williams, Paul Mccarthy, Matt Tilley

**2005**

John Harnden, Claire Mitchell-Taverner, David Wansborough, Lachlan Dreher, Mike Brady

**2004**

Jasmine Brammer Sam Kekovich

**2003**

John Elliott Sue Stannley Peter Schwab

**2002**

Russell Mark, Lauryn Ogilvie, David Parkin, Caroline Wilson, Len Thompson

**2001**

Graeme McMahon, John Elliott, Ian Dicker, Lauren Burns, Noel Waite, David Parkin, Max Walker, Robert Shaw

**2000**

Ron Casey, Claire Mitchell-Taverner, Terry Daniher, Shane Woewodin

**1999**

Ron Casey Roy Higgins Dennis Pagan Max Walker

# The Business of Winning Luncheon

Friday 10th September,  
12.00 for 12.30 PM  
Studio 3, Crown Casino



**Myeloma Foundation of Australia Inc.**

**Our Vision**

*"A world without myeloma"*

*We will facilitate myeloma research in Australia, inform and support those living with the disease and educate those involved in its care and treatment.*

**Our Purpose**

Our purpose is to help prevent myeloma and control its symptoms and effects by: supporting specialists clinicians and researchers and raising funds for myeloma research enabling those affected to take control of their situation and work in partnership with their health professionals raising awareness and understanding of the condition among health professionals and the wider community creating opportunities for fellowship within the myeloma community.

**Our Values**

We are passionate about assisting and improving the quality of life of Australians living with myeloma.

We understand the myeloma experience and empathise with patients and family members. The needs of people with myeloma will always come first.

*We will present an organised and professional operation.*

*We will operate in an inclusive and transparent manner.*

## BOOKING FORM/Tax Invoice

RSVP Friday, 3rd September  
**Myeloma Foundation of Australia Inc,**  
PO Box 417, Balwyn, 3103  
ABN 30 476 390 368

Phone: **Steve Roach**  
(Myeloma Foundation)  
0410 567 553

Email: shroach@myeloma.org.au

Phone: **Peter Allen**  
(Rotary Club of Camberwell)  
0412 035 247

Email: pallen@netspace.net.au

Title/Name.....

Address 1.....

Address 2.....

Town.....Post Code.....

Phone.....Mobile.....

Email.....

**I wish to book..... tickets @ \$105 each**

**I wish to book..... tables @ \$1050 each**

**I wish to donate \$.....**

**I would like information about sponsorship**

**Please accept my payment of \$.....**

*Please make cheques payable to Myeloma Foundation of Australia Inc.*

**Please charge my credit card**

**AMEX**

**Visa**

**Mastercard**

**Diners**

Card number..... Expiry date ...../.....

Name on card.....

Amount \$..... Signature.....

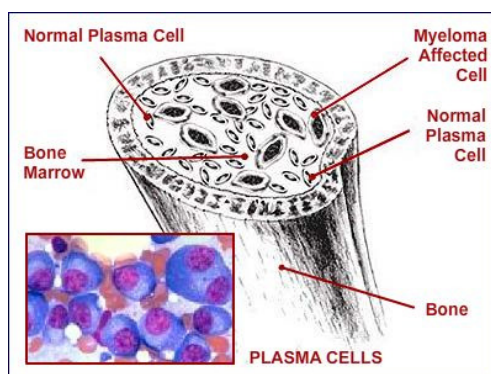
## What is Myeloma?

**M**yeloma, also known as multiple myeloma, is a type of bone marrow cancer arising from plasma cells, which are normally found in the bone marrow. Plasma cells form part of your immune system.

Normal plasma cells produce antibodies (also called immunoglobulins) to help fight infection. In myeloma, the abnormal plasma cells release only one type of antibody known as paraprotein, which has no useful function. It is often through the measurement of this paraprotein that myeloma is diagnosed and monitored.

Bone marrow is the 'spongy' material found in the centre of larger bones in the body (see Figure 1). As well as being home to plasma cells, the bone marrow is the centre of blood cell production (red blood cells, white blood cells and platelets).

Myeloma affects multiple (hence multiple myeloma) places in the body where bone marrow is normally active in an adult, i.e. within the bones of the spine, skull, pelvis, the rib cage, and the areas around the



shoulders and hips. The areas usually not affected are the extremities: that is the hands, feet, and lower arm / leg regions. This is very important since the function of these critical areas is usually fully retained.

Of the approximately 1,200 Australians who are diagnosed with multiple myeloma each year, almost all are older than 40 years.

Multiple myeloma is most common in people aged 60 years and older, and men are affected more often than women.

There is no known cure for myeloma.



**Myeloma Foundation  
of Australia Inc.**

*Towards a world  
without myeloma.*

*The "My Foundation" logo is loosely based upon the notion of ongoing positive change from a darker world to a lighter world.*

*The two 'worlds' are illustrated by the gold and blue spheres. The gold sphere is moving to blank out the sombre blue.*

*"My Foundation" - the Myeloma Foundation of Australia is a catalyst in that process and a participant in the journey to a world without myeloma. At that time the gold sphere will prevail and the dark sphere will be no more.*

THE WINNERS LUNCHEON IS PROUDLY SUPPORTED BY OUR MAJOR SPONSOR – MOLTONI GROUP



***"...delivering sustainable outcomes  
for future generations."***

***Moltoni Group is a privately owned Australian company that operates nationally and internationally in activities that support sustainable outcomes for future generations. Our credo is to 'create an Alternative Tomorrow', through resource recovery and innovation.***

Our business units are structured to support specific industry sectors that we believe offer the best opportunities to achieve our goal.

Our approach is to seek out the best technologies and match these with the best teams to deliver practical, commercial and effective solutions. We don't waver from our commitment to our clients. We are there for the long haul and as such see that the relationships that we develop are pivotal to achieving our common goals.

***Like to know more? Please visit our web site at***

***[www.moltoni.com.au](http://www.moltoni.com.au)***

***Rob Moltoni  
Managing Director***



**\* Panellists are subject to changes** - At the time of this publication the on-stage Winners panel is still building and is subject to changes. **Pictured are:** AFL Legend **Leigh Matthews**, Champion Jockey **Craig Williams**, AFL star and public speaker **Glen Manton**, Australian hockey star and gold medallist **Claire Mitchell-Taverner**, Australian Netball star **Renaë Callinan** and AFL legend **Tommy Hafey** all of whom have agreed to participate. In some cases, their appearance is conditional upon their other professional obligations